

## ESPRESSO CLEAN® ESPRESSO MACHINE CLEANING POWDER

### HIGH PERFORMANCE

With its rapidly soluble and free-rinsing formulation, Espresso Clean® removes coffee oils, grounds and stains, improving the taste and aroma of espresso. Espresso Clean® leaves no trace of odour.

### SAFE FOR YOU AND YOUR MACHINE

Safe for all machine parts including brass, stainless steel and copper, Espresso Clean® is listed with NSF. It has been tested, evaluated and passed the most stringent toxicology and corrosivity standards. The ingredients and formulation of the products that are NSF certified are safe, leave no harmful residues and do not cause corrosion within the coffee machine.

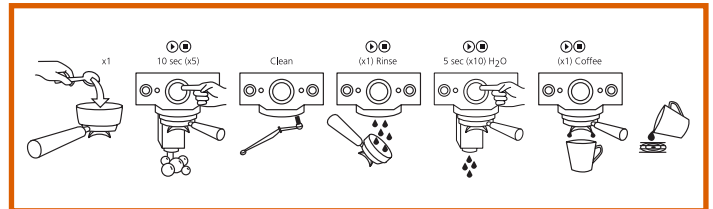
### ECONOMICAL

Only the smallest amount of Espresso Clean® is needed for a superior clean. A measuring scoop is included in all jars for accurate dosing.

### HOW TO USE

#### PROCEDURE TO BACK-FLUSH EACH DELIVERY GROUP

- Remove coffee filter from group handle, and replace with blind filter.
- For daily cleaning add 1 teaspoon of Espresso Clean® into the group handle and insert as if brewing espresso. If the machine is cleaned less often, use 2 teaspoons.
- Start cycle and allow to run for 10 seconds to dissolve cleaner.
- Stop cycle and allow to sit for 10 seconds.
- Start and stop cycle 4 more times - run for 10 seconds, stop for 10 seconds.
- Remove the group handle and rinse well under stream of water from delivery group. Turn off.
- Re-insert handle with blind filter, start and stop cycle 10 times - run for 5 seconds, stop for 2 seconds to ensure thorough rinsing. Remove blind filter and insert regular filter.
- Brew and discard a single espresso to re-season machine.



#### WATCH THE HOW TO VIDEO HERE

<https://www.youtube.com/CafettoGlobal>

#### PROCEDURE TO CLEAN FILTERS AND GROUP HANDLES

- Soak group handles and filters in 500ml of hot water with 2 teaspoons of Espresso Clean® Espresso Machine Cleaner for 10 minutes. Rinse thoroughly in running hot water.

PRODUCT	TYPE OF UNIT PACK	NET UNIT WEIGHT	# OF UNITS PER CASE	PRODUCT CODE / INDIVIDUAL	PRODUCT CODE / CASE	GROSS CASE WEIGHT
Espresso Clean®	Jar	1kg (35.2oz)	12	E11836	E11839	13.6kg (30lbs)
	Jar	500g (17.6oz)	12	E25105	E25121	6.98kg (15.4lbs)
	Jar	100g (3.5oz)	12	E28253	E28128	1.9kg (4.2lbs)



# PRODUCT INFORMATION

## ESPRESSO CLEAN<sup>®</sup> ESPRESSO MACHINE CLEANING POWDER

### PACKAGING SPECIFICATIONS

#### 1kg

Carton Dimensions: (L x W x H) 42cm x 32cm x 17cm (17" x 13" x 7")  
Pallet: 80 cartons (10 Layers of 8 Cartons)  
Pallet Weight: 1110 kg (2450 lb)  
Pallet Dimensions: (L x W x H) 1.10m x 1.10m x 1.84m (44" x 44" x 72")

#### 500g

Carton Dimensions: (L x W x H) 27cm x 18cm x 24cm (10.6" x 7" x 9.4")  
Pallet: 140 cartons (7 Layers of 20 Cartons)  
Pallet Weight: 878 kg (1936 lb)  
Pallet Dimensions: (L x W x H) 1.10m x 1.10m x 1.86m (44" x 44" x 73")

Espresso Clean<sup>®</sup> is a registered trademark of Cafetto Pty Ltd.